



Villa 4 on Ash Avenue

Set on Ash Avenue this 2 bedroom open plan north facing villa is a stone's throw away from the Lodge. Be close to all the main facilities including the 7-day café & restaurant. Featuring fully modernised kitchen and bathroom, sunny lounge and dining area leading directly onto a covered patio. Internal carpeted garage and private landscaped gardens make this home a very special property.

- 2 bedrooms
- 1 bathroom + guest toilet
- Covered patio area
- North facing lounge & bedroom
- Internal carpeted garage
- Landscaped garden
- Outside washing line.

\$885,000

Purchase now under Right to Occupy

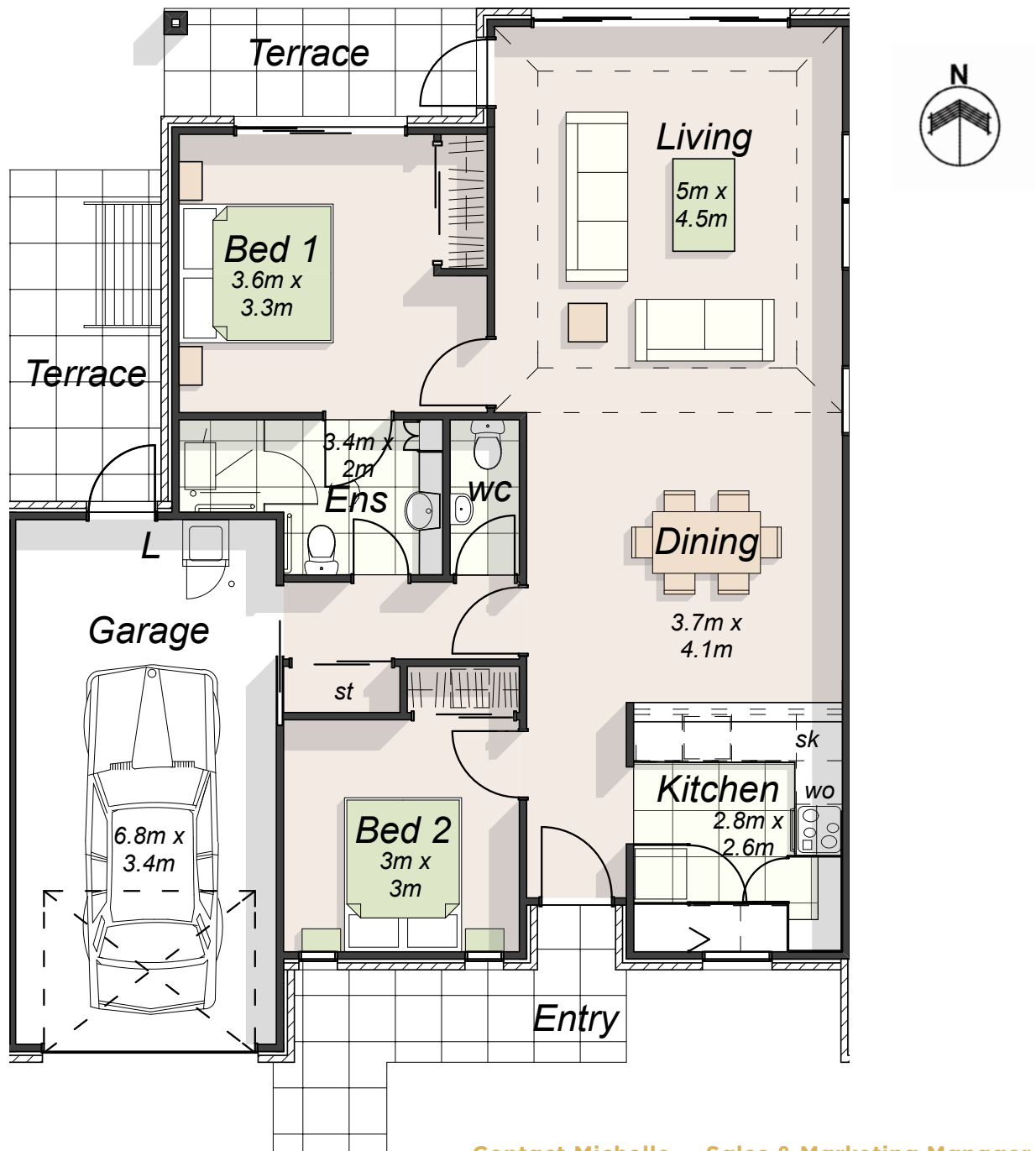


**Contact Michelle — Sales & Marketing Manager
for more information on**

0800 102 662
michelle.wainhouse@fairviewvillage.co.nz
21 Fairview Avenue, Albany
www.fairviewvillage.co.nz

Sarazen Villa

Now this feels like home



Terrace Area = 13m²
Internal Area = 112m²
Total Area = 125m²

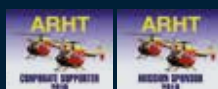
Plans and photographs are representational only

**Contact Michelle — Sales & Marketing Manager
for more information on**

0800 102 662
michelle.wainhouse@fairviewvillage.co.nz
21 Fairview Avenue, Albany
www.fairviewvillage.co.nz

By Premier Lifestyle Villages

Premier Lifestyle Villages Group includes Fairview Lifestyle Village, Fairview Care and Settlers Lifestyle Village



Corporate and Mission
sponsor for Westpac
Rescue

fairview
LIFESTYLE VILLAGE