



## Villa 115 on Lavender Close

This stunning large 2 bedroom, Pinehurst style villa is now available in Lavender Close. Featuring a modern kitchen with new appliances and under tile heating, large adjoining dining area and north facing lounge. Enjoy morning coffee on the fully covered front terrace or entertain friends with a barbeque. The master bedroom has double wardrobes and open plan accessible bathroom. A further guest toilet, internal garage and outside washing line completes this very special villa.

### \$949,000

**Purchase now under Right to Occupy**



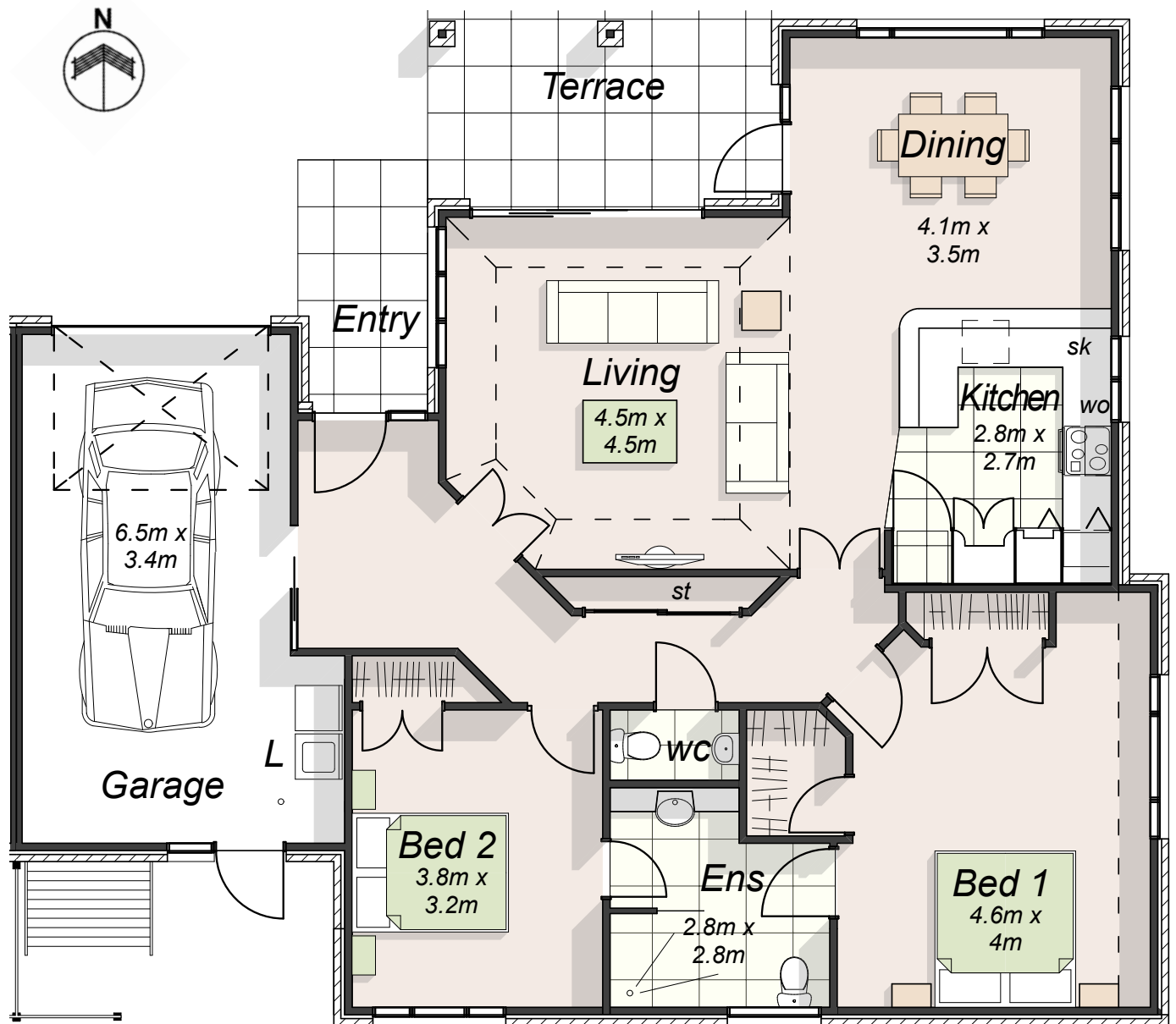
- Large 2 bedroom fully refurbished villa
- North facing lounge and dining
- Modern kitchen
- New appliances
- Covered front terrace area
- Under tile heating
- Heat pump
- Single internal garage
- Outside washing line

**Contact Michelle — Sales & Marketing Manager for more information on**

**0800 102 662**  
**michelle.wainhouse@fairviewvillage.co.nz**  
**21 Fairview Avenue, Albany**  
**www.fairviewvillage.co.nz**

# Pinehurst Villa

*Now this feels like home*



Contact Michelle — Sales & Marketing Manager  
for more information on

0800 102 662  
michelle.wainhouse@fairviewvillage.co.nz  
21 Fairview Avenue, Albany  
www.fairviewvillage.co.nz

Terrace Area = 14m<sup>2</sup>  
Internal Area = 134m<sup>2</sup>  
**Total Area = 148m<sup>2</sup>**

*Plans and photographs are representational only*

By Premier Lifestyle Villages

Premier Lifestyle Villages Group includes Fairview Lifestyle Village, Fairview Care and Settlers Lifestyle Village



Corporate and Mission  
sponsor for Westpac  
Rescue

**fairview**  
LIFESTYLE VILLAGE